

# PARROTFISH

By Ellen Wittlinger

LES for Grade 9



**Table de concertation  
des groupes de femmes**  
GASPÉSIE • ÎLES-DE-LA-MADELEINE

# ✦ ***SAFE SPACES FOR EVERYONE*** ✦

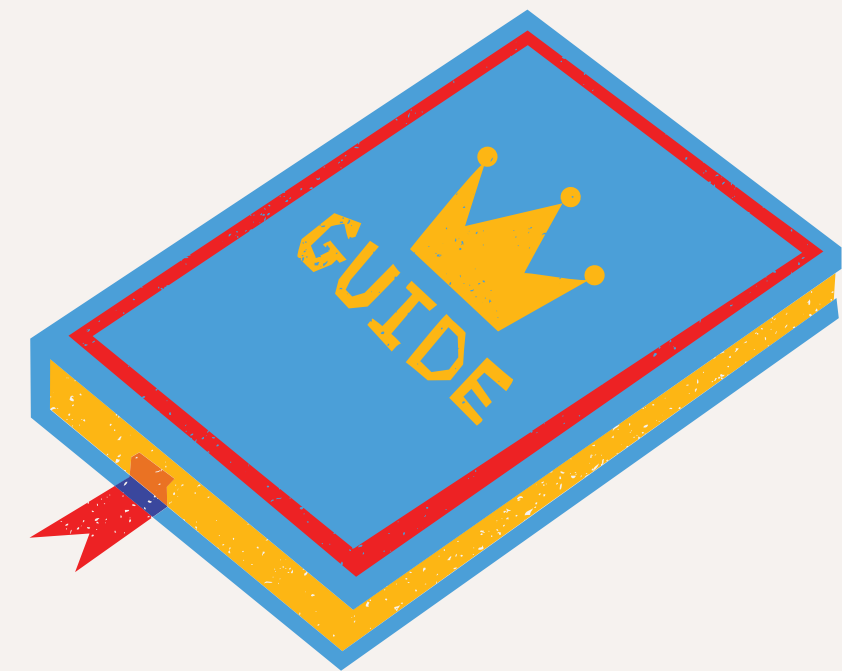


**What is a safe space ?**

**Why do we need safe spaces ?**



# GROUND RULES



# Types of Communication



## **Assertive:**

- stand up for their rights without denying other people theirs
- respect themselves as well as others
- ask for what they want in a straightforward manner
- express their emotions (both positive and negative) in a healthy way

## **Passive:**

- give in and say yes even when they don't want to
- put the feelings and concerns of others before their own
- keep their concerns to themselves

## **Aggressive:**

- think of themselves first, at the expense of others
- dominate others
- use threats or force

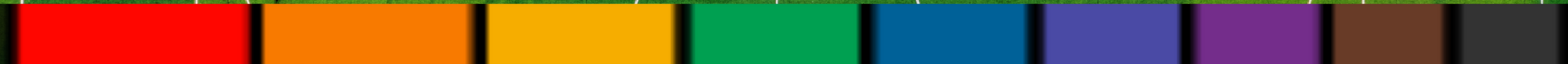
## **Passive-aggressive:**

- may seem to agree to avoid confrontation (passive) but will manipulate others to say things for them, or say things behind someone's back (aggressive)

**Now let's put our  
knowledge into  
practice with  
scenarios**



Where on the spectrum might  
your gender be ?



Feminine

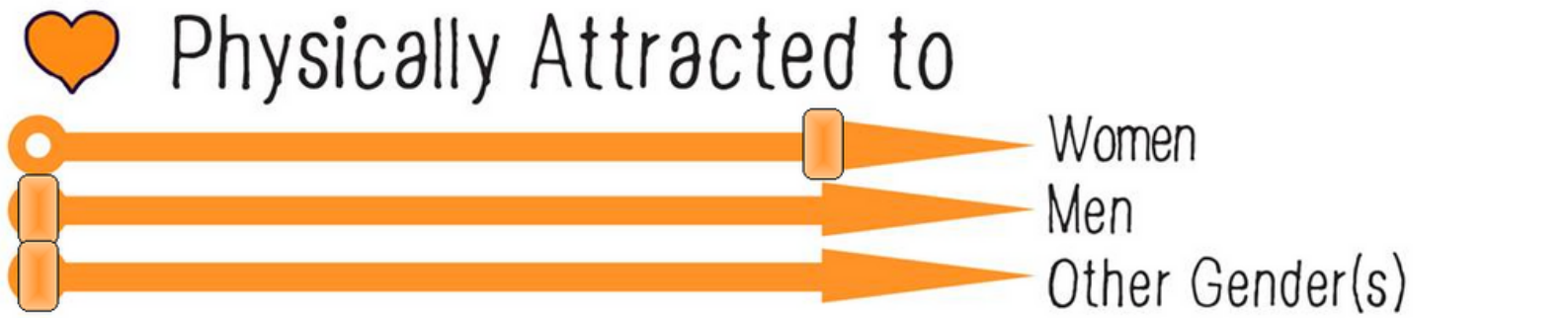
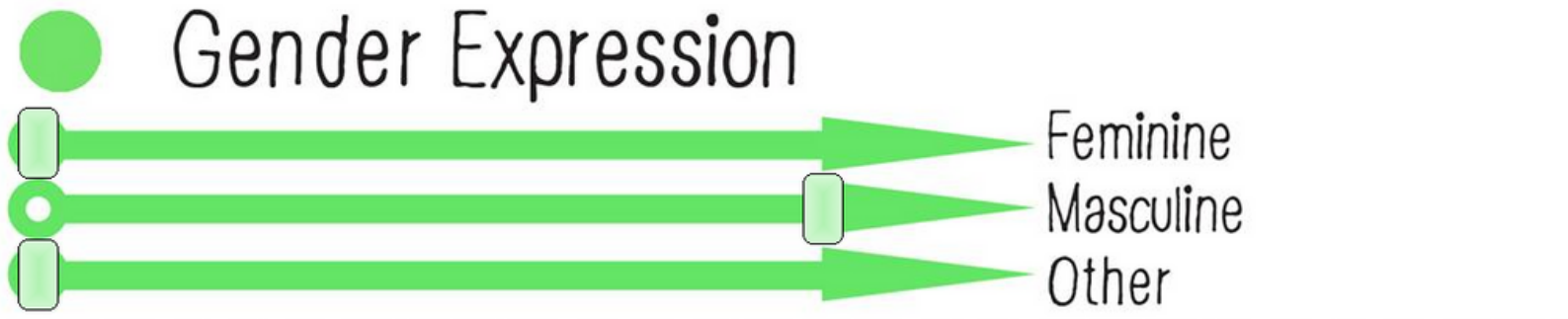
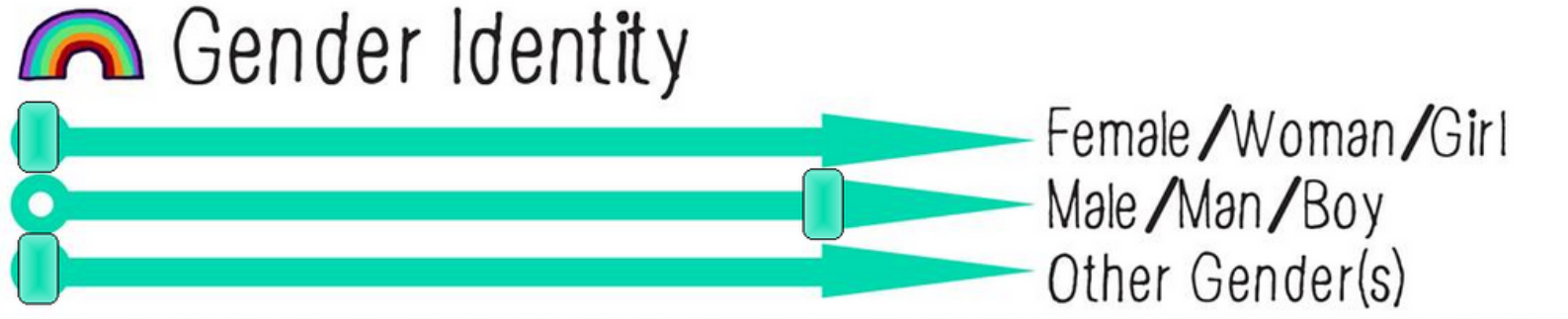
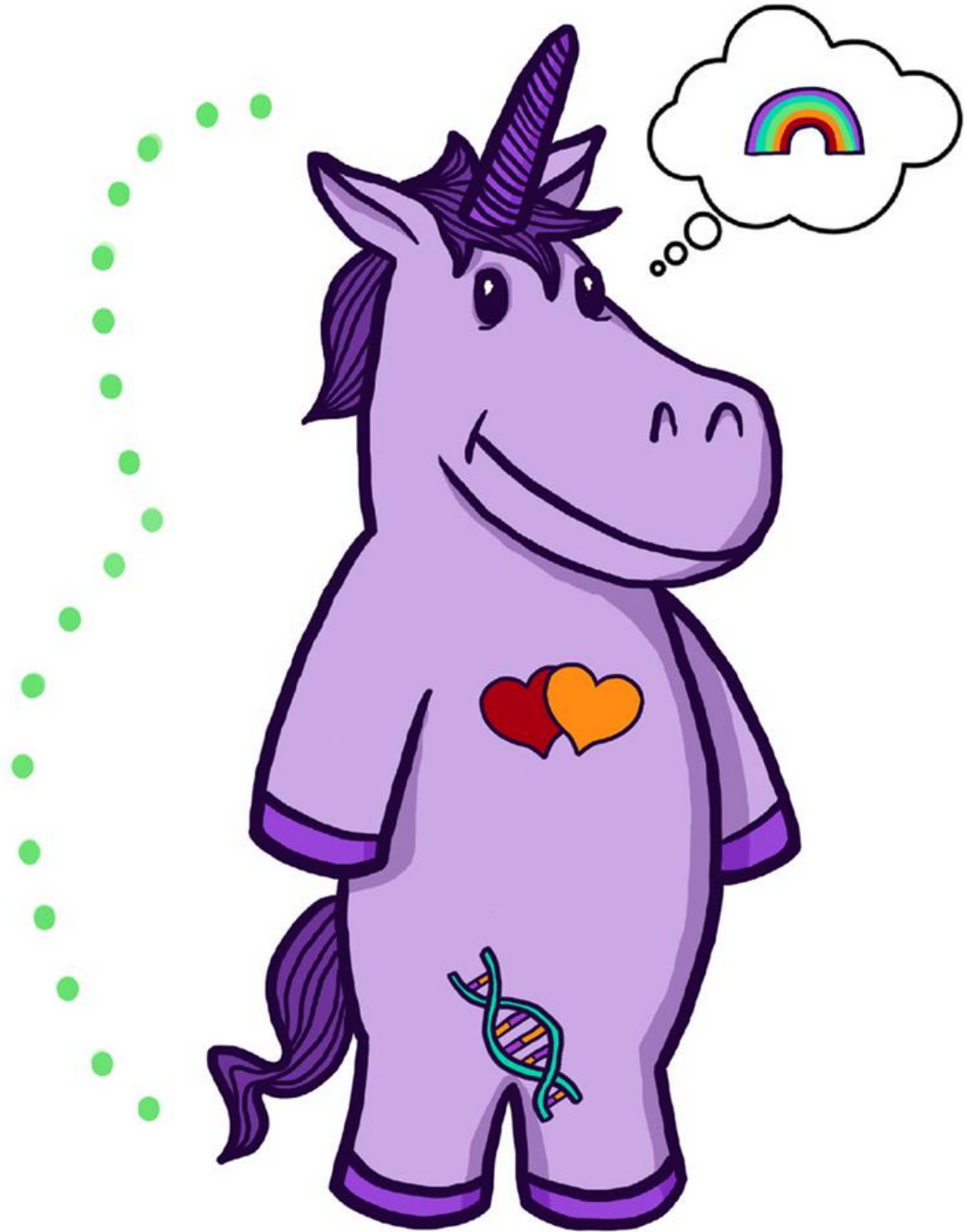
Masculine

Transgender/Genderqueer/T  
wo-spirited, etc.

**The giant  
football  
field**

# The Gender Unicorn

Graphic by:  
**TSER**  
Trans Student Educational Resources



**What about  
Grady?**

To learn more, go to:  
[www.transstudent.org/gender](http://www.transstudent.org/gender)

Design by Landyn Pan and Anna Moore

# L'histoire de sam



Attitudes to adopt

Attitudes to avoid







# 5 Ways to Make Schools Safer for LGBTQ Students

1



Be an activist! Speak out when someone says something discriminatory towards the LGBTQ community.

2



**Start a GSA/QSA:**  
Having a safe space for queer students at school can save LIVES.

3



**Educate Your Teachers:**

A teacher who simply knows about being LGBTQ can make a world of difference for students who are gender and sexual minorities. Schedule a conference with your teacher or speak at faculty meeting days about LGBTQ issues.

4



**Host an LGBTQ Panel**

Panels allow students and staff to directly ask important questions to people who can educate them.

5

**Introduce a Trans-Inclusive Policy:**

Trans-friendly policies set fair guidelines for school staff members who may not know what to do otherwise.

Learn more at [transstudent.org/policy](http://transstudent.org/policy)



- t transstudent
- f /transstudent
- @transstudent

For more information, go to [transstudent.org/graphics](http://transstudent.org/graphics)

**TSER**  
Trans Student Educational Resources

**IT GETS BETTER PROJECT**



Consent: which  
path would you  
take ?





Kahoot  
quizz: is it  
consent or  
not  
consent?

